

Binocular Face Recognition 10-inch Smart Access Control Terminal



Accurate Recognition
Fast Face Recognition



Remote door open
Saves time and effort



Binocular Detection
Liveness Anti-Spoofing



10-inch Full-view
touchscreen



Product Overview

The WO101 10-inch binocular door phone is a Smart Access Control device featuring a wide dynamic range RGB+IR binocular camera. It supports multiple unlocking methods and advanced recognition technology, providing users with an efficient and secure entry management solution. Focusing on users' core life scenarios, it extends smart applications such as Building Intercom, Smart Access Control, and Security Monitoring from indoor to outdoor environments, delivering an integrated smart experience. Featuring advanced wide dynamic range (WDR) technology, this device ensures clear image capture in diverse lighting conditions, making it ideal for residential communities, office buildings, schools, hospitals, and other locations.

Application Scenarios



Library/Dormitory/Access



Residential



Campus Entrance/Exit



Hospital



Shopping Mall



Office Building

Product Features



Features a 10-inch IPS full-view LCD display.



Enables remote upgrades via the web interface and local upgrades via USB drive.



Supports 5,000-face database with a recognition accuracy exceeding 99.99% and facial recognition completed in under 1 second.



Capable of storing 100,000 facial recognition attendance records locally, or up to 1,000,000 records without associated image data.



API docking documentation is available, supporting tailored development.



Supports multiple unlocking methods, including Facial Recognition, QR code, Mini Program, Fingerprint/Palm Vein, and combined options as like Face+Password/Access Card.

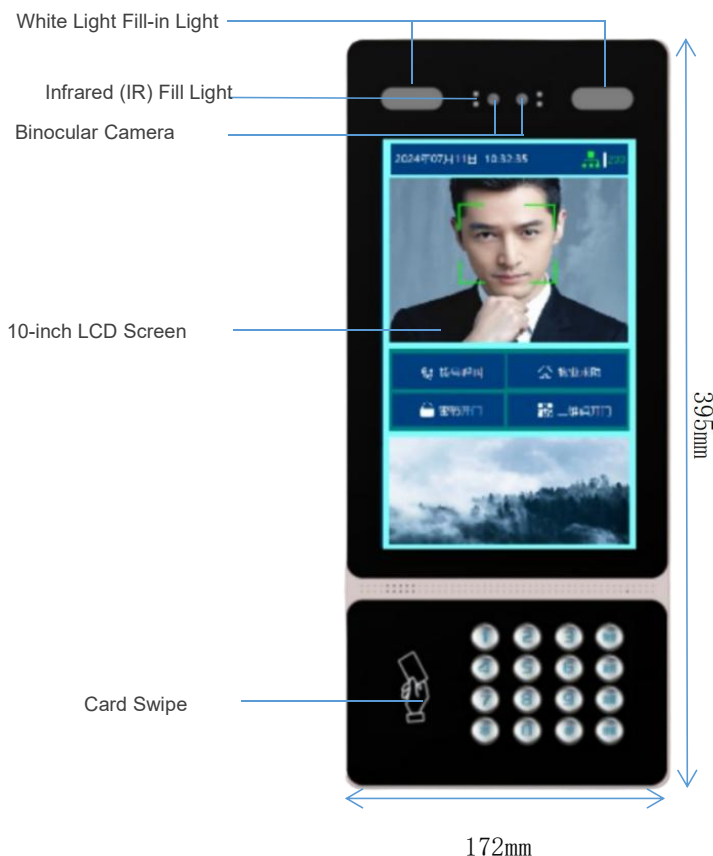


Incorporates an industrial-grade binocular wide dynamic camera, complemented by built-in dual infrared and LED fill lights for enhanced night vision.

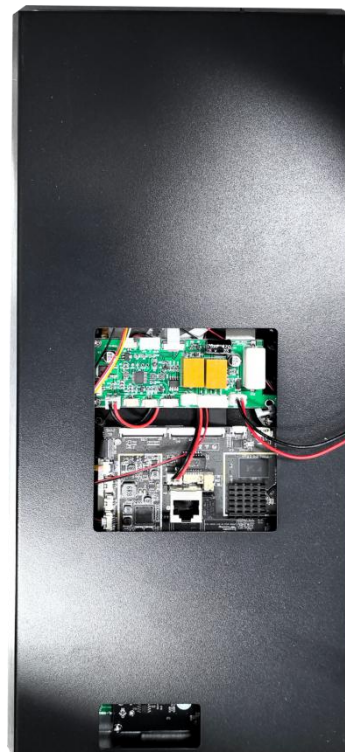


AI high-performance processor with dedicated NPU providing a powerful 1T computing capability.

Product Appearance & Dimensions



30mm



Cameras

Resolution	Dual 200W Pixel
Type	Binocular Camera
Aperture	F2.2
Focus Distance	50-150cm
White Balance	Automatic
Fill Light	LED/Infrared Dual Fill Light

Screen

Dimensions	10-inch IPS LCD Screen
Resolution	800x1280
Touch	Support

Configuration

CPU	Dual-Core CPU
NPU	1.0TOPS
Operating System	Linux
Storage Capacity	EMMC 8G
Network Module	Ethernet, Wireless (Wi-Fi), 4G Network (Optional)
Audio	2W/8 Ω Speaker
Card Reader	IC/ID Card Reader (Optional)

System Functions

Face Database	5,000 Persons
---------------	---------------

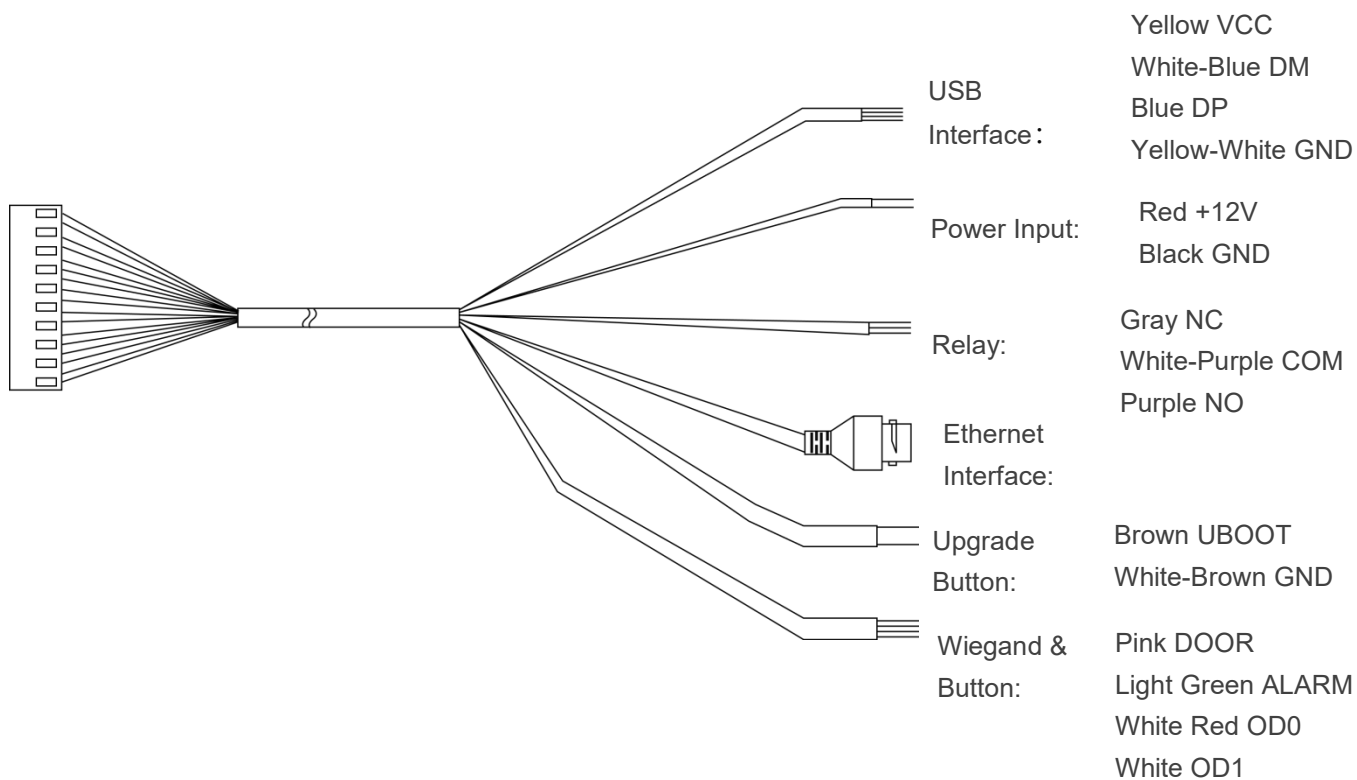
Attendance Records	100,000 entries
1:N Facial Recognition	Support
Liveness Detection	Support
Stranger Detection	Support
Recognition Distance	50-150cm
Recognition Speed	<1 second
Recognition Rate	99.99%
UI Interface Configuration	Support
Device Remote Upgrade	Support
API Interface	Device Management, Personnel/Photo Management, Communication Logs, System Settings
Deployment Method	Supports public cloud deployment, private deployment, and LAN/standalone usage.

Standard Parameters

Power	12V 2A
Operating Temperature Range	-10°C-60°C
Storage Temperature	-20°C-70°C
Power Consumption	24W (MAX)
Installation Method	Wall-Mounted Installation
Protection Level	IP54
Device Dimensions	395*172*30mm



Interface and Pin Definitions



Note: Cable and Interface Definitions (Interfaces may vary slightly by batch)